

AVAILABLE SIZES

DN8 (3/8"), DN13 (1/2")

CONNECTIONS

C&T Medium Pressure, others on request

ACCESSORIES ON REQUEST

- Locking devices
- Actuators
- Mounting holes
- Position switches
- Combinations
- Detent

MATERIAL CODE DESCRIPTION

Materials	44m8
Body	1.4571
Trunnion	Nitronic-50®
Ball seats	PEEK
Body and stem sealing	FKM / PTFE*
Tmin / Tmax	-40°C / +85°C*

*Others on request.

CERTIFICATION

ATEX IIC (H₂), Ex-zone 1, 2G

DIN EN ISO 15848-1 (low emission)

GENERAL DIMENSIONS

Type	l	B	H	h	m	Vmin	SW	a	g	t	K	H1	Lever
HFKH1000-DN8	88	65	148	110	45	12,5	9	65	Ø9	30	202	167	St
HFKH1000-DN13	105	73	150,5	115	47	12,5	11	82	Ø9	30	202	169,5	St

CONNECTION TYPE

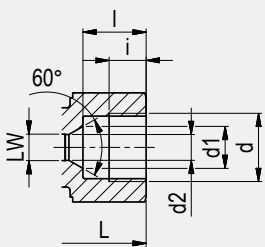
DIMENSIONS

ORDER CODE PER MATERIAL COMBINATION

C&T MEDIUM PRESSURE

Type	LW	L	i	d	d1	d2	l	Weight [Kg]
HFKH1000-DN8-9/16" C&T	8	131	11,2	13/16-16UN	7,8	12,7	19,1	6,08
HFKH1000-DN13-1" C&T	13	168	20,6	1 3/8-12UNF	14,3	22,4	33,3	8,37

PN [bar]	44m8
1034	on request
1034	on request



Please note the pressure ratings of the tube connections!