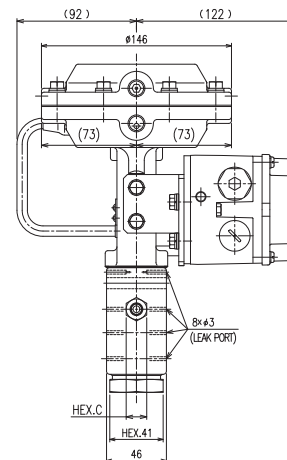
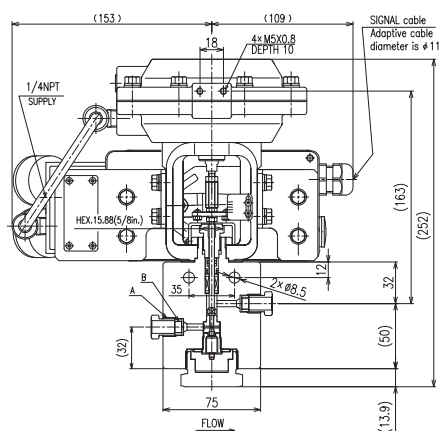


# Flow Control Valves



## Features

1. Flow coefficient (Cv value) can be selected by replaced stem and seat.
2. Smart positioner with communications function can be available.
3. CE (Ex) II 2G Exc IIC T6

## Specifications

Design Pressure	100 MPa
Fluid temperature range	-40 to +85°C
Ambient temperature range	-40 to +60°C
Body materials	ASTM A479 316/316L (Dual spec.)

Note: When using in a pre-cool line, please contact **Fujikin** when ordering.

## Dimensions, Ordering No.

Nominal size	GLAND Thread (valves body side)	Collar Thread (tube side)	HEX.C	Cv value	Weight	ITEM No.
	A	B				
6.35(1/4in.)	7/16-20UNF	(Left)1/4-28UNF	12.7	0.15	6kg	E32GM3R4-7100-4M- *1
9.52(3/8in.)	9/16-18UNF	(Left)3/8-24UNF	15.8	0.25	6kg	E32GM3R4-7100-6M- *1

\*Coned-and-threaded connection MP type \*For other nominal sizes, please contact us. \*1 Cv value Number

## Positioner

E32	Exia IIC T6(Intrinsic safty explosion-proof)
E53	Exd IIC T6(Flameproof enclosure explosion-proof) HART®communications

\*Please contact us when ordering for required explosion-proof standards. (ATEX, CSA, KOSHA...etc.)

## Cv Value

Cv Value number	Value Nature Range Ability Cv Value	EQ%, Linear									
		R2 20:1	R3 30:1	R4 40:1	R5 50:1	R6 60:1	R7 70:1	R8 80:1	R9 90:1	R10 100:1	
09	0.25										
10	0.15										
11	0.1										
12	0.07										
13	0.05										
14	0.035										
15	0.025										
16	0.015										
17	0.01										

It is possible a combination of inner painted in blue.



1. All wetted parts of Valves, Unions and Fittings in this catalog should be with non-corrosive gases only.
2. Please use each valve after confirming the instruction manual and daily inspection manual.